

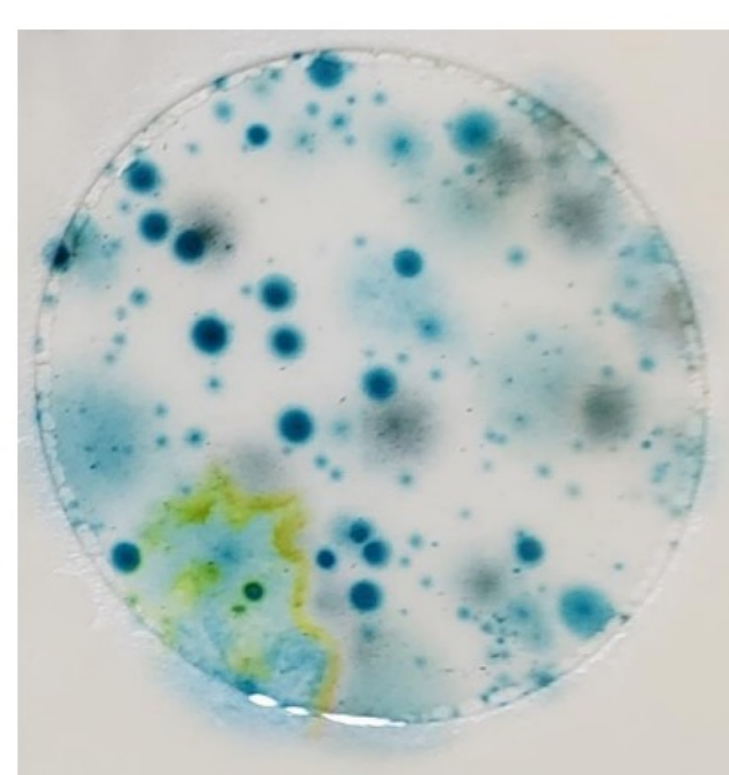


Understanding quality assurance infrastructure and checkpoints necessary within manufacturing and agricultural practices to reduce microbial bioburden and produce safe, high-quality products

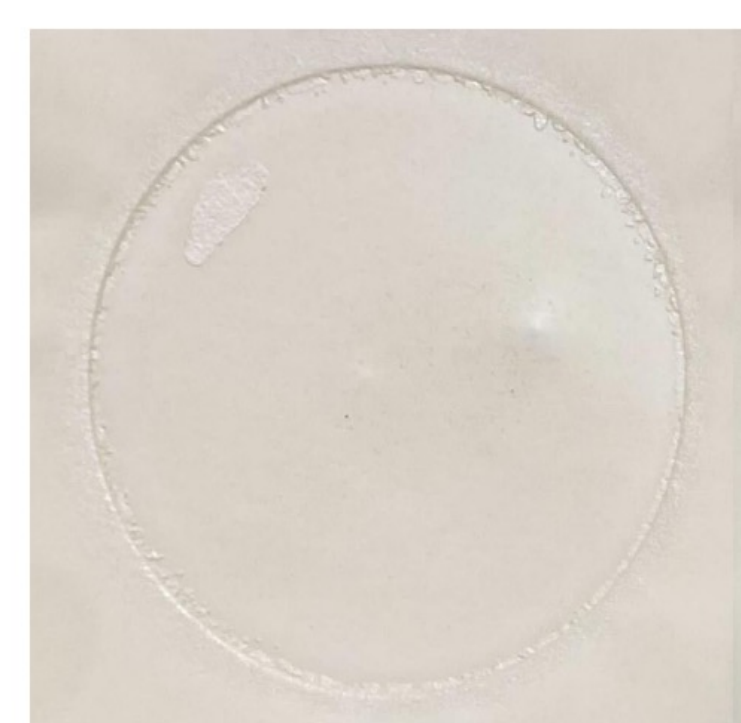
SOIL

1. Investigate your suppliers COA's to ensure the conditions of raw materials
2. Store soil in a cool/dry environment.
3. Inspect and asses the bioburden of each batch of raw media before use.
4. Continue visual inspection and testing throughout cultivation processes.

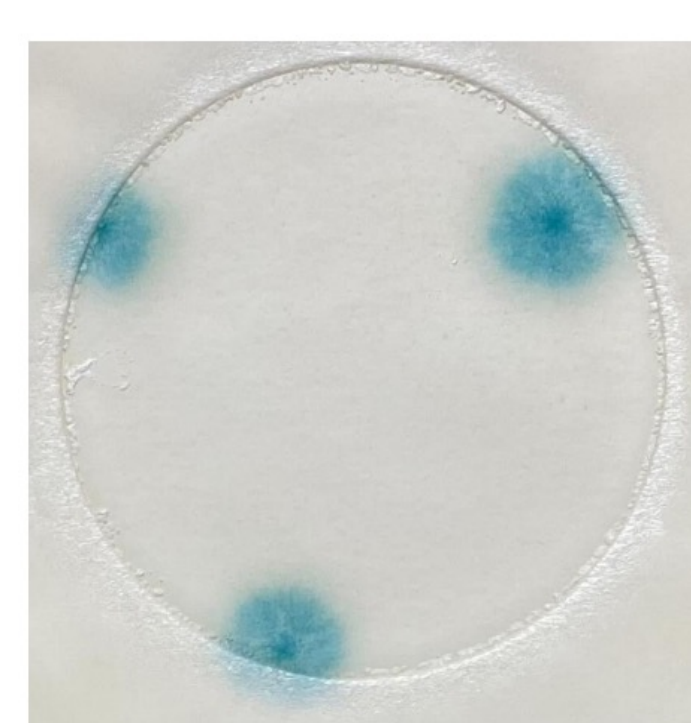
Fresh Coco (dilution 1)



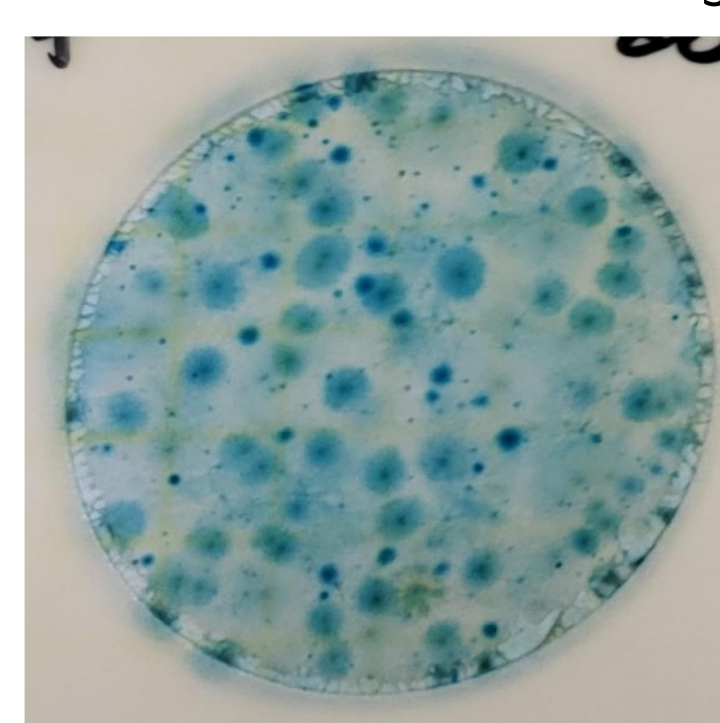
New Grow Block
0 CFU



Used Grow Block
30 CFU

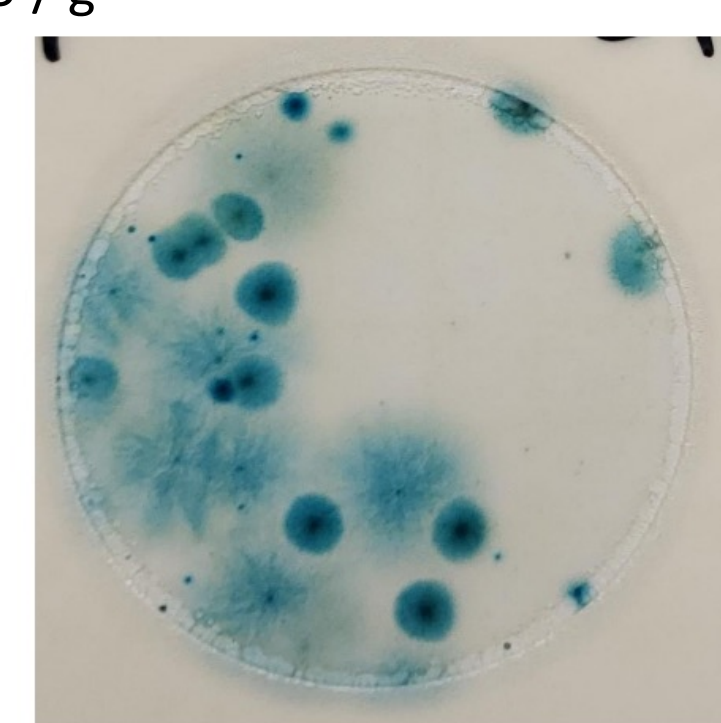


Propagation Rockwool

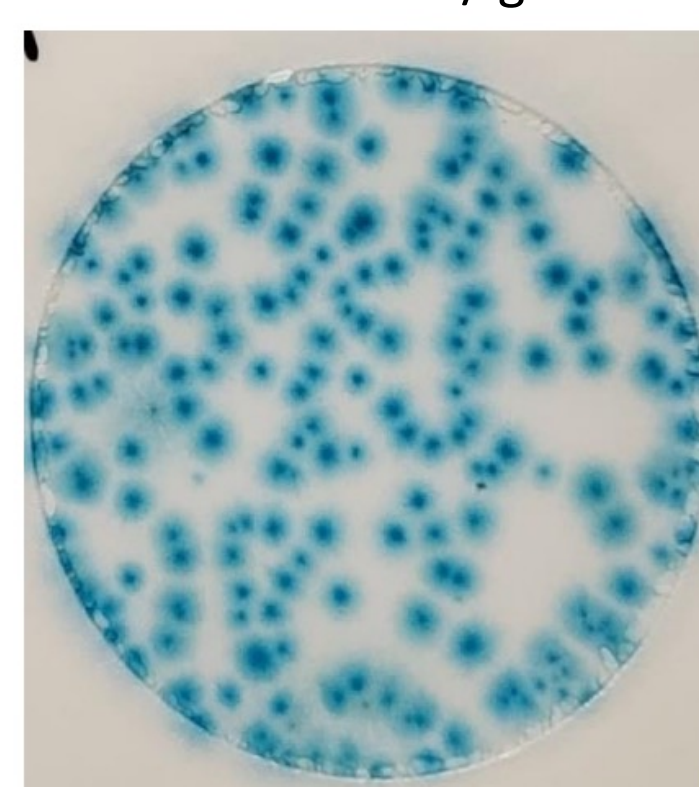


Propagation Rockwool (dilution 1)

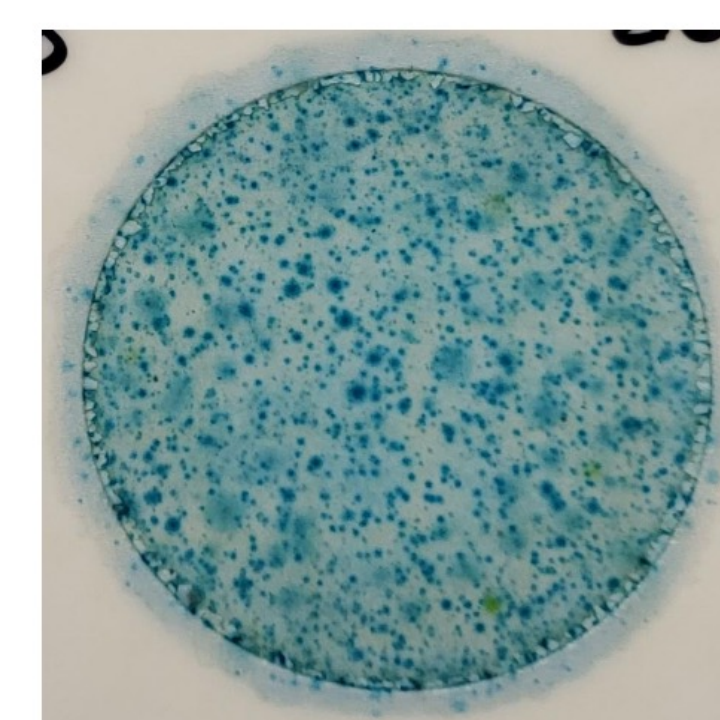
3,300 CFU / g



New Rockwool
190 CFU / g



F1 Rockwool



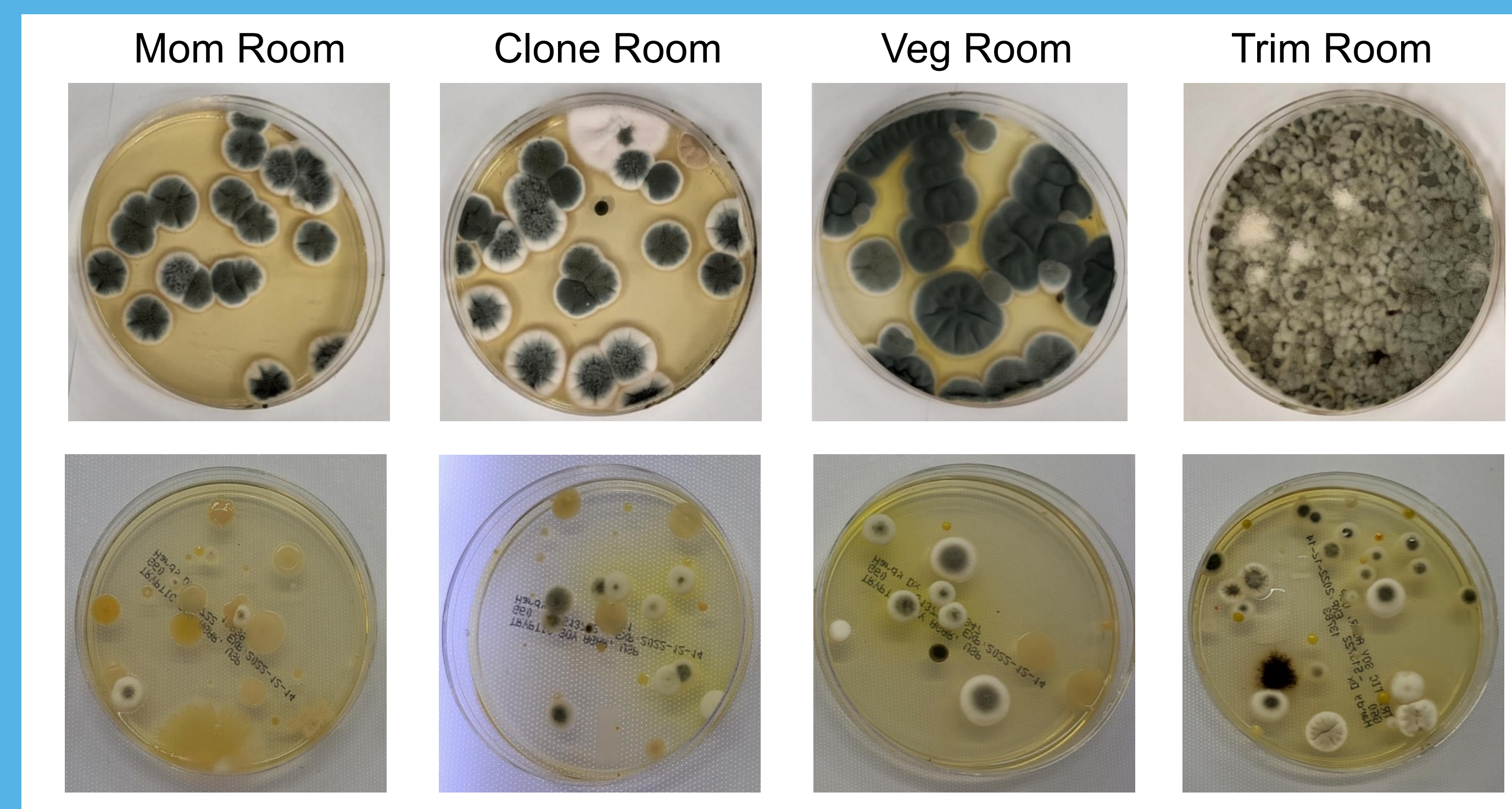
TNTC

F1 Rockwool (dilution 1)



AIR

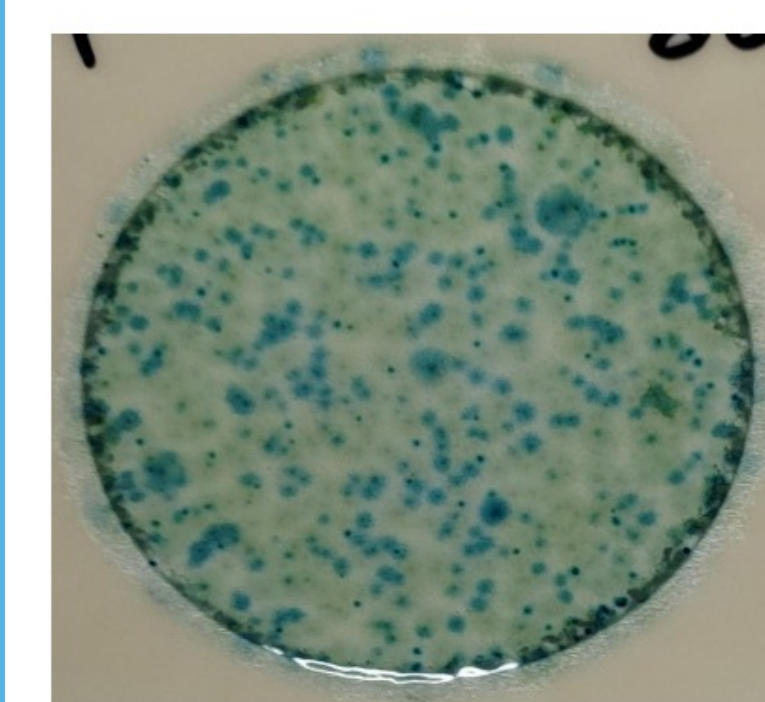
1. Regular monitoring of air velocity, temperature, and humidity throughout the facility should be established, and outliers investigated.



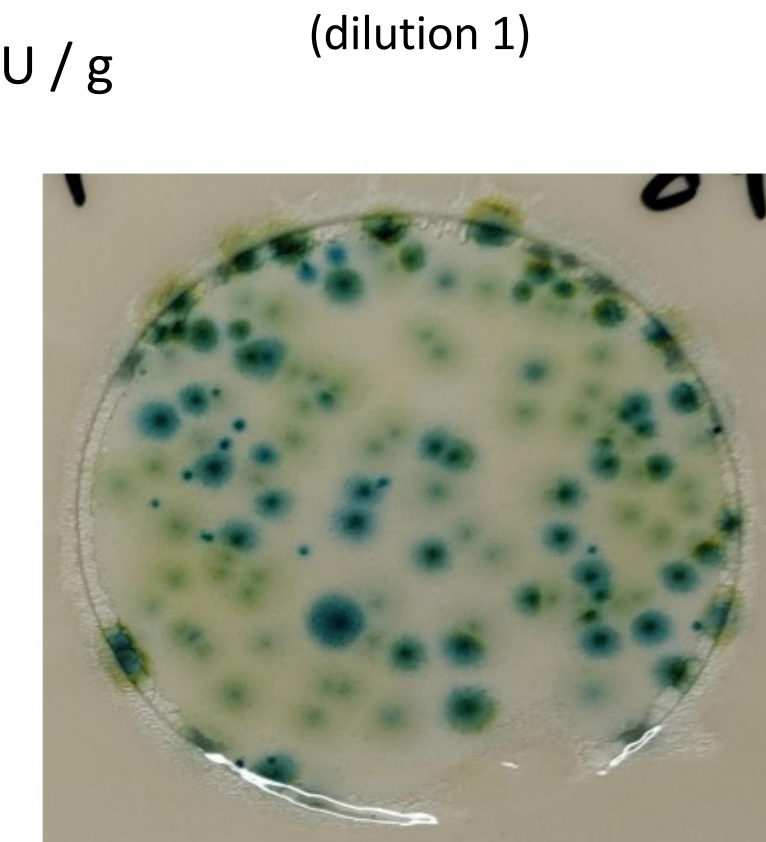
2. When both filling and emptying pots, utilize an isolated space with reduced airflow to limit the amount of aerosolization of soil particulates.

Propagation HVAC

2,500 CFU / g



Propagation HVAC (dilution 1)



WATER

1. Investigate and routinely assess the bioburden of the source water.
2. Establish routine sanitation protocols for all nutrient tanks and irrigation lines.
3. Continue visual inspection and testing of water throughout irrigation system.

RO Water
0 CFU / g



Non-plant Water (No Hose)

0 CFU / g

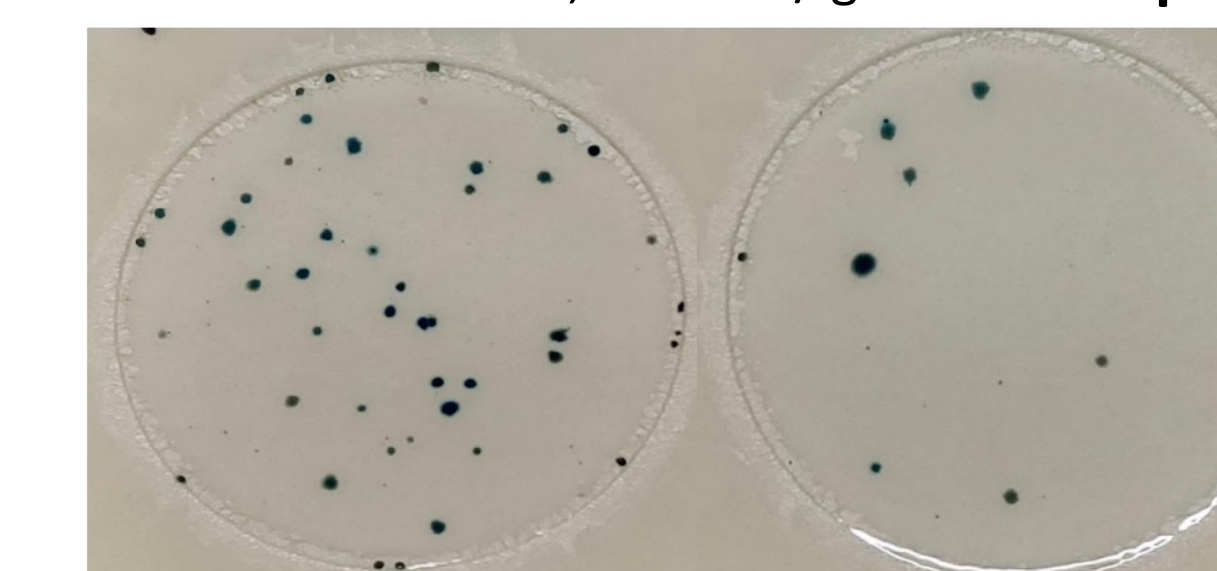
Non-plant Water (No Hose)
(dilution 1)



Non-plant Hose Water

1,510 CFU / g

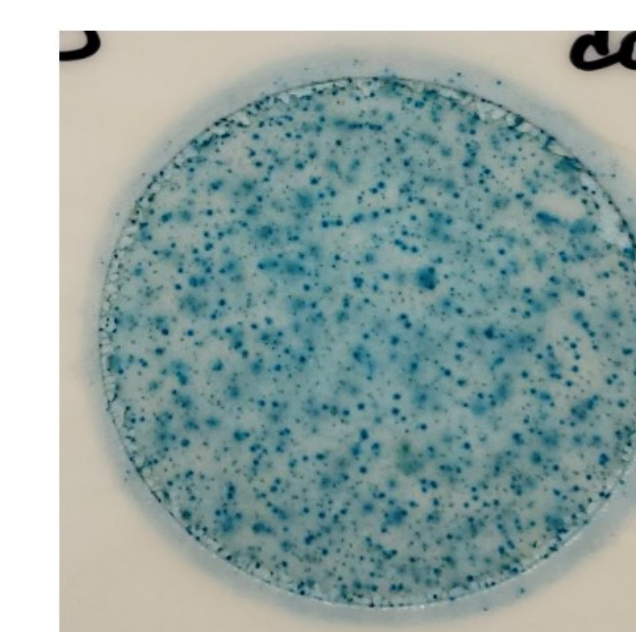
Non-plant Hose Water
(dilution 1)



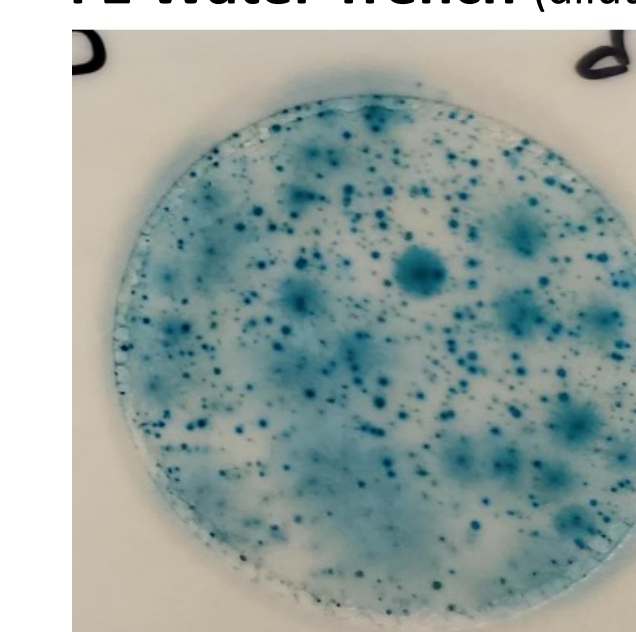
4. Excess water should drain away from plants and not remain stagnant within the cultivation environment.

F1 Water Trench

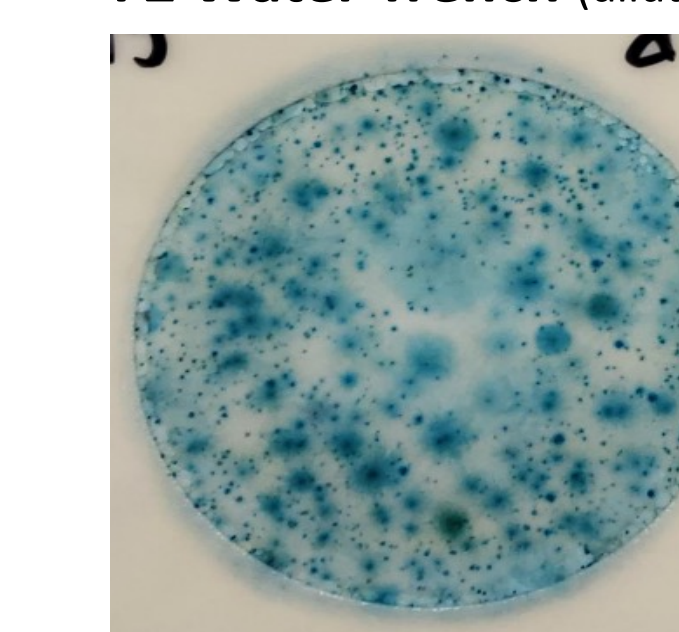
TNTC



F1 Water Trench (dilution 1)



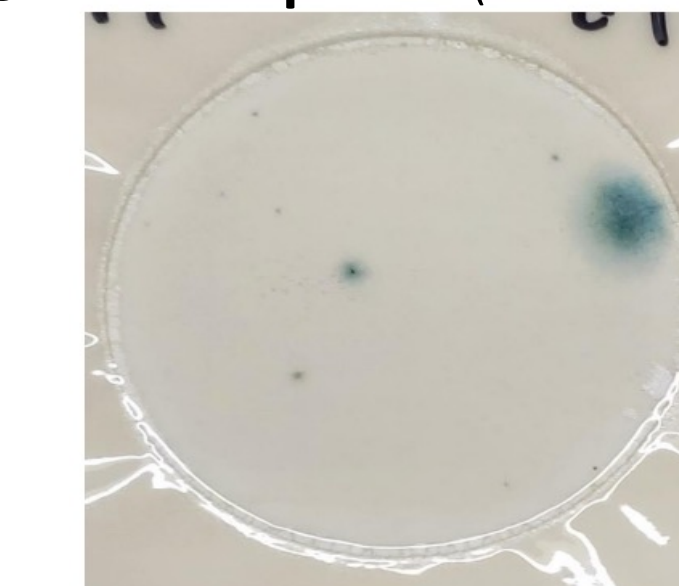
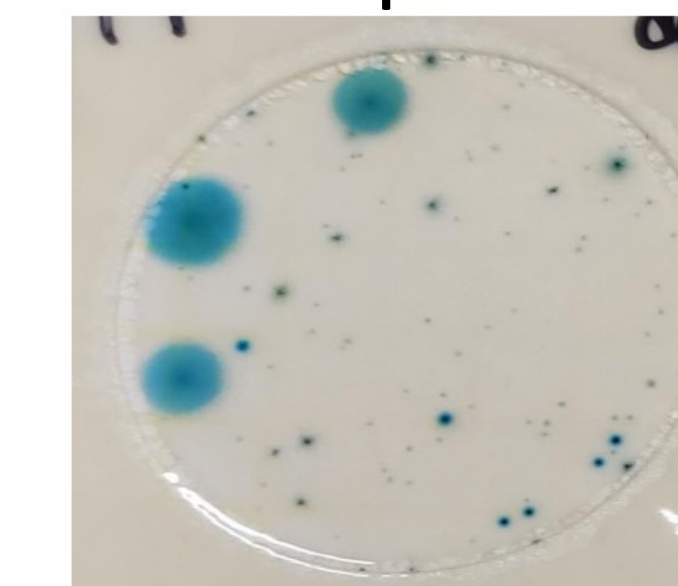
F2 Water Trench (dilution 1)



Damp Wall

600 CFU / g

Damp Wall (dilution 1)



Carly Bader M.S.

Manager of Science

WILLOW
INDUSTRIES

Learn More!

