

Comprehensive comparison of cannabis cultivars using untargeted analytical workflows

Aldwin Anterola¹, Laura McGregor² and John Abrams³

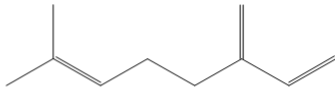
¹Chief Scientific Officer, Veda Scientific

²SepSolve Analytical

³CESC

Cannabis aroma volatiles

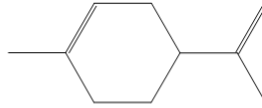
- Cannabis terpenes and terpenoids
 - ✓ Impart distinctive aromas and flavours



Myrcene

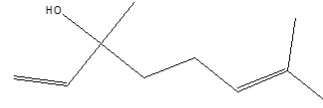
Aroma

Spicy, herbal



Limonene

Citrus, orange



Linalool

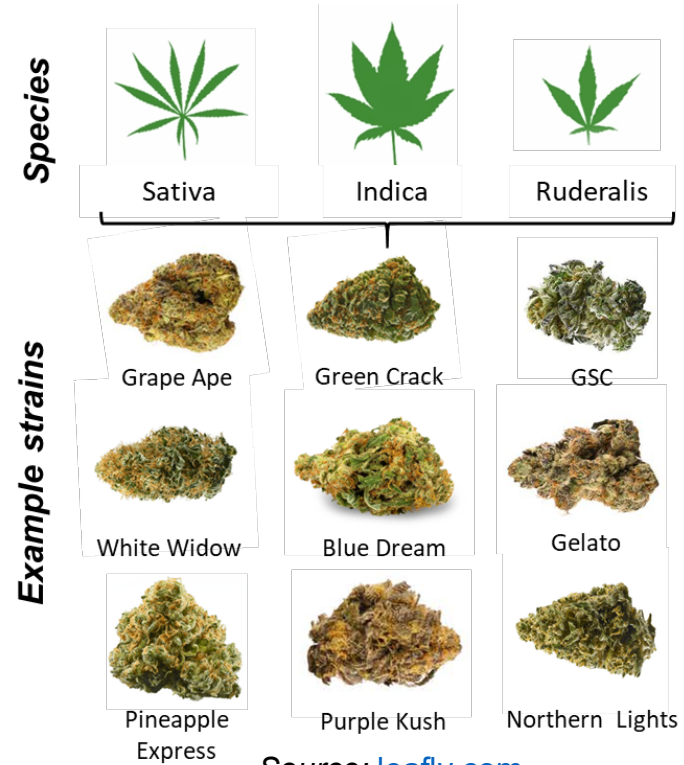
Floral, citrus

“From the literature, it is therefore difficult to know what to believe when it comes to the odor of limonene.” (J. Chem. Educ. 2021, 98, 11, 3600–3607)

- Many other aroma volatiles are also present, e.g. esters, aldehydes, etc.

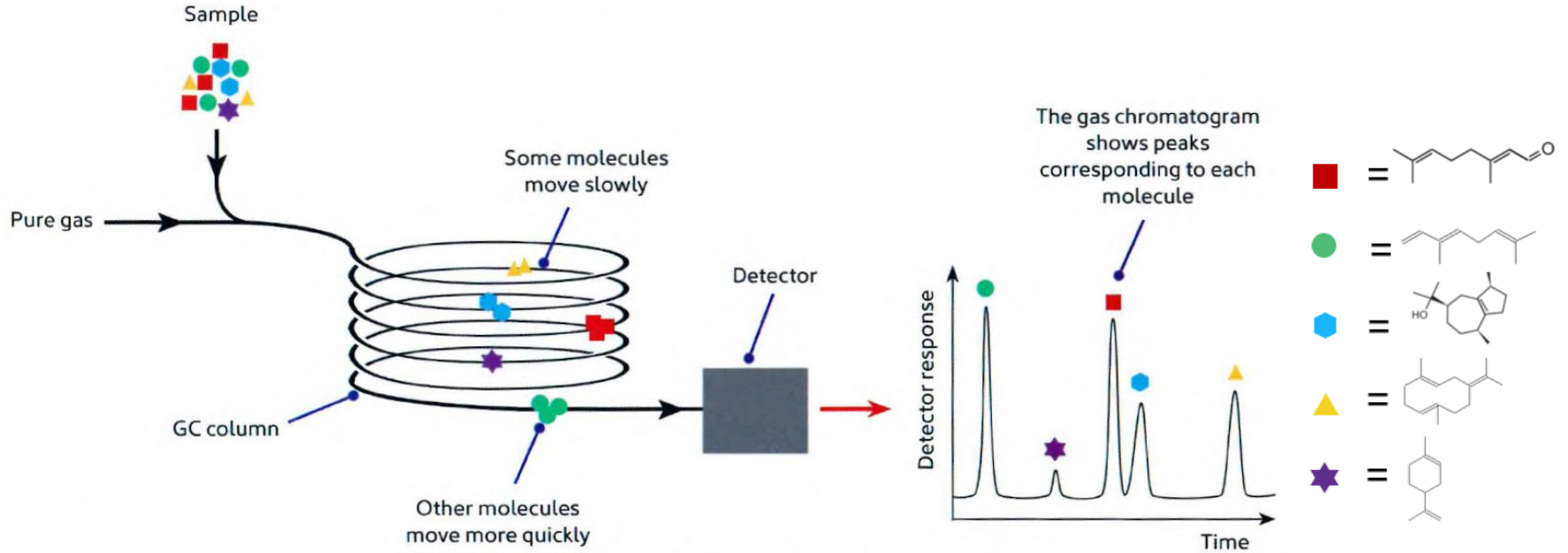
Aroma volatiles vs. cultivars

- Much remains unknown about cultivar distinctions
- Specific aroma profiles can be engineered by plant breeders

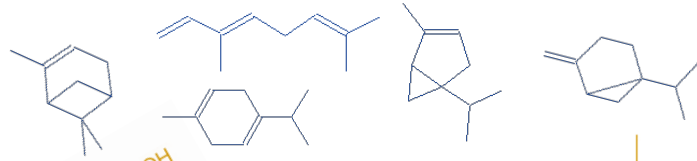
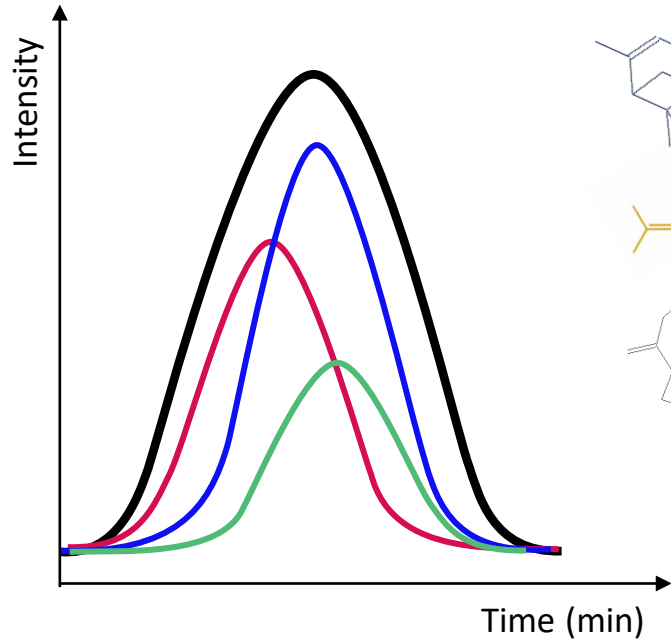


Source: [leafly.com](https://www.leafly.com)

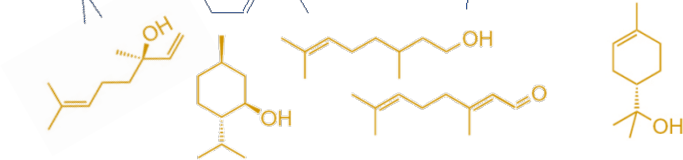
Is GC-MS fit-for-purpose?



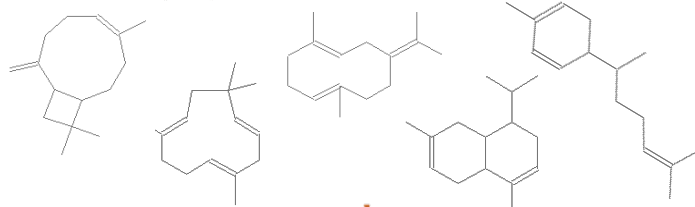
Is GC-MS fit-for-purpose?



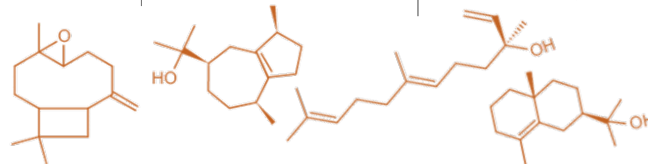
Monoterpenes



Monoterpenoids



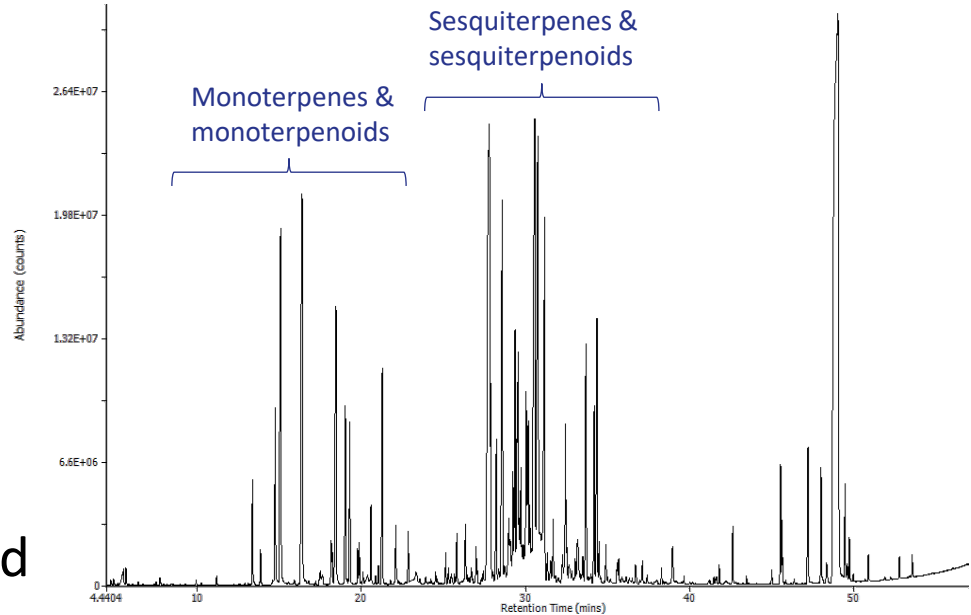
Sesquiterpenes



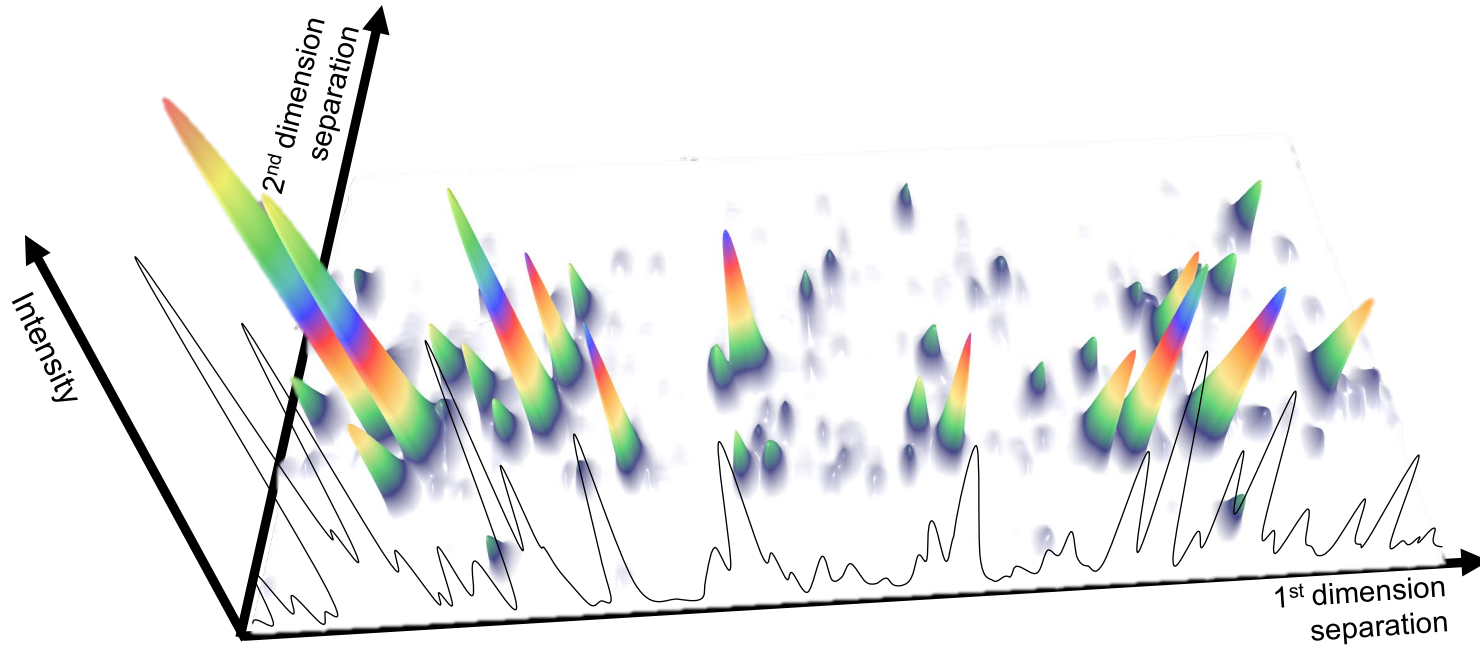
Sesquiterpenoids

Challenges in terpenes analysis

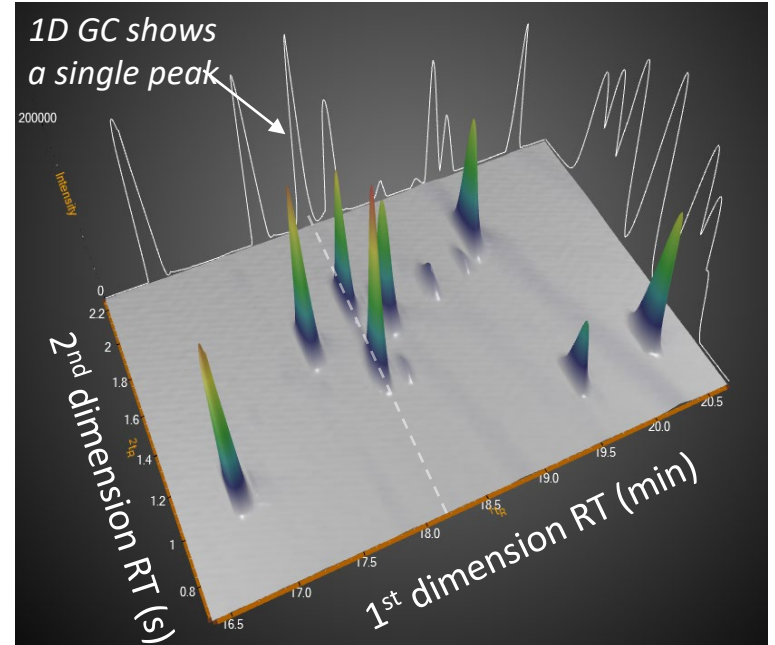
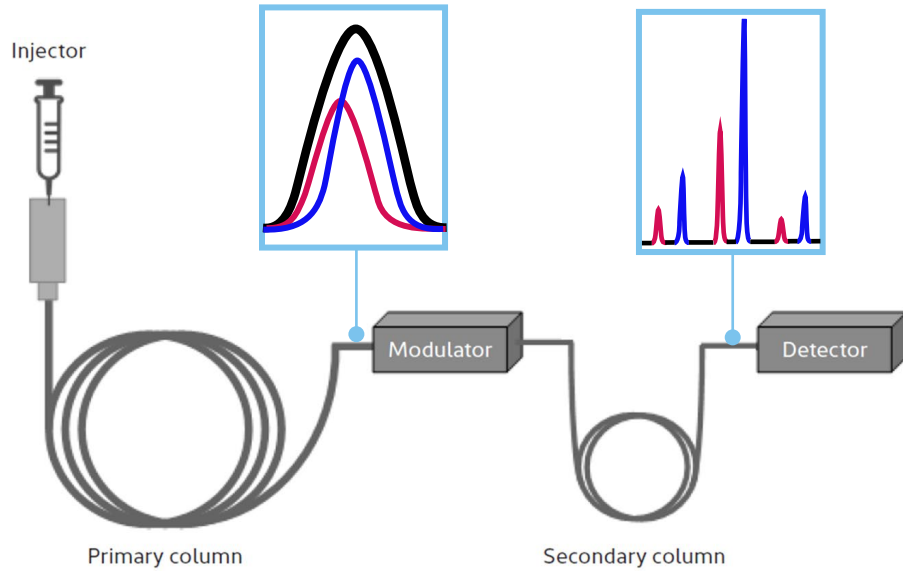
- Over 200 terpenes have been identified in cannabis
- 1D GC results in coelutions between terpenes and terpenoids
- Abundance of important terpenes can be over-estimated



What is GC×GC?

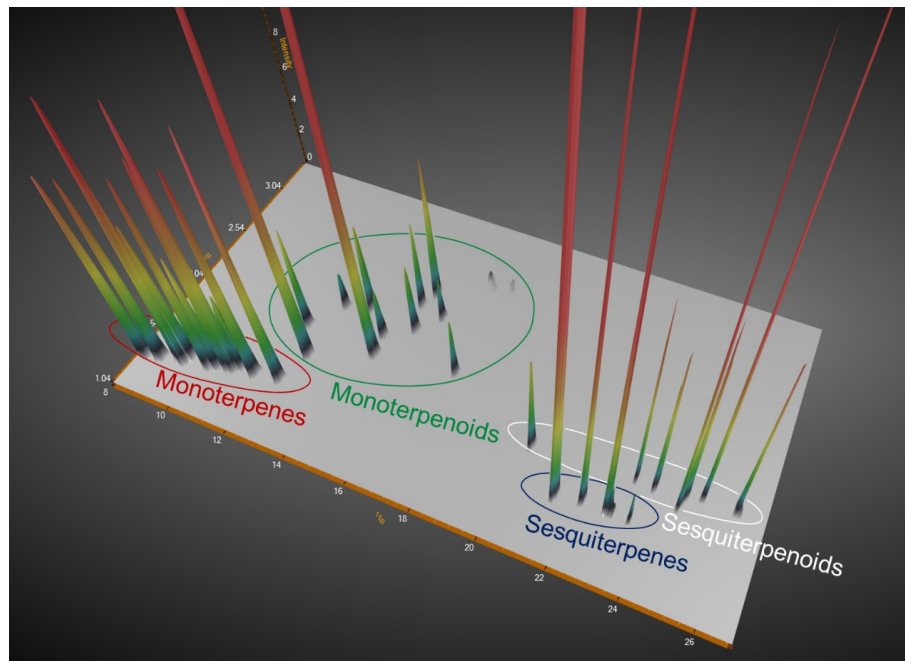


What is GCxGC?



Cannabis terpenes by GC×GC-TOF MS

- Enhanced separation of terpenes and terpenoids
- Comprehensive detail on terpene profile
- Detection of other compounds

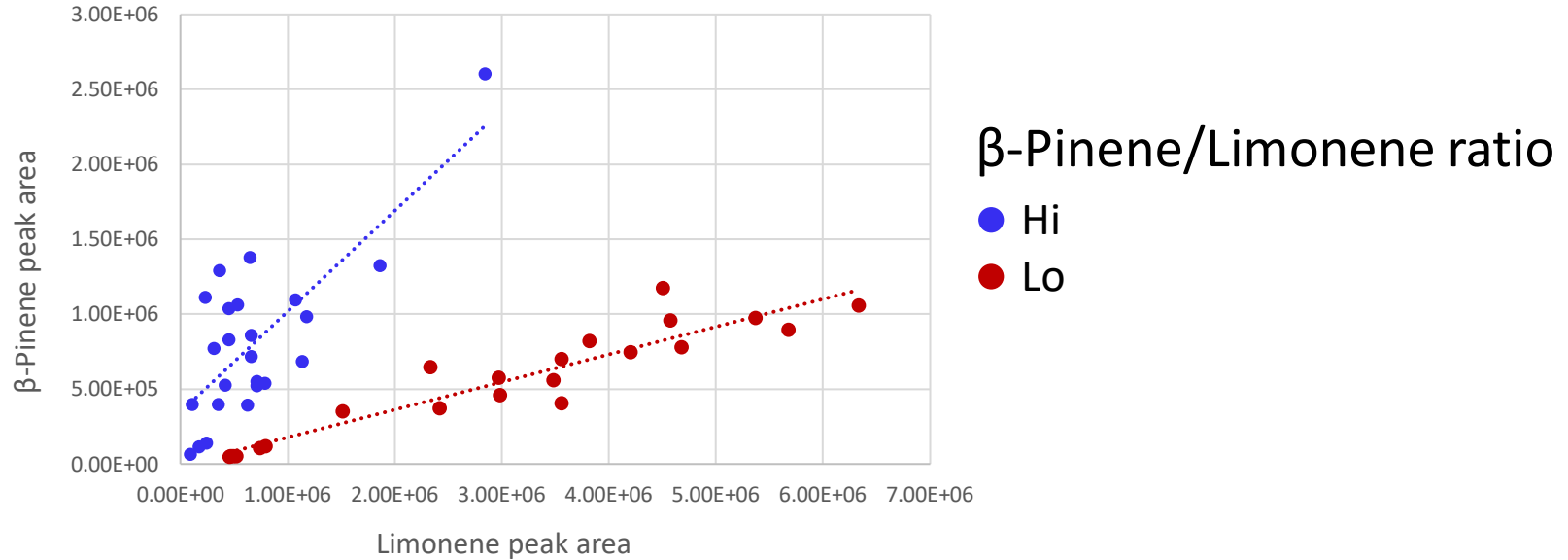


Analysis of cannabis cultivars

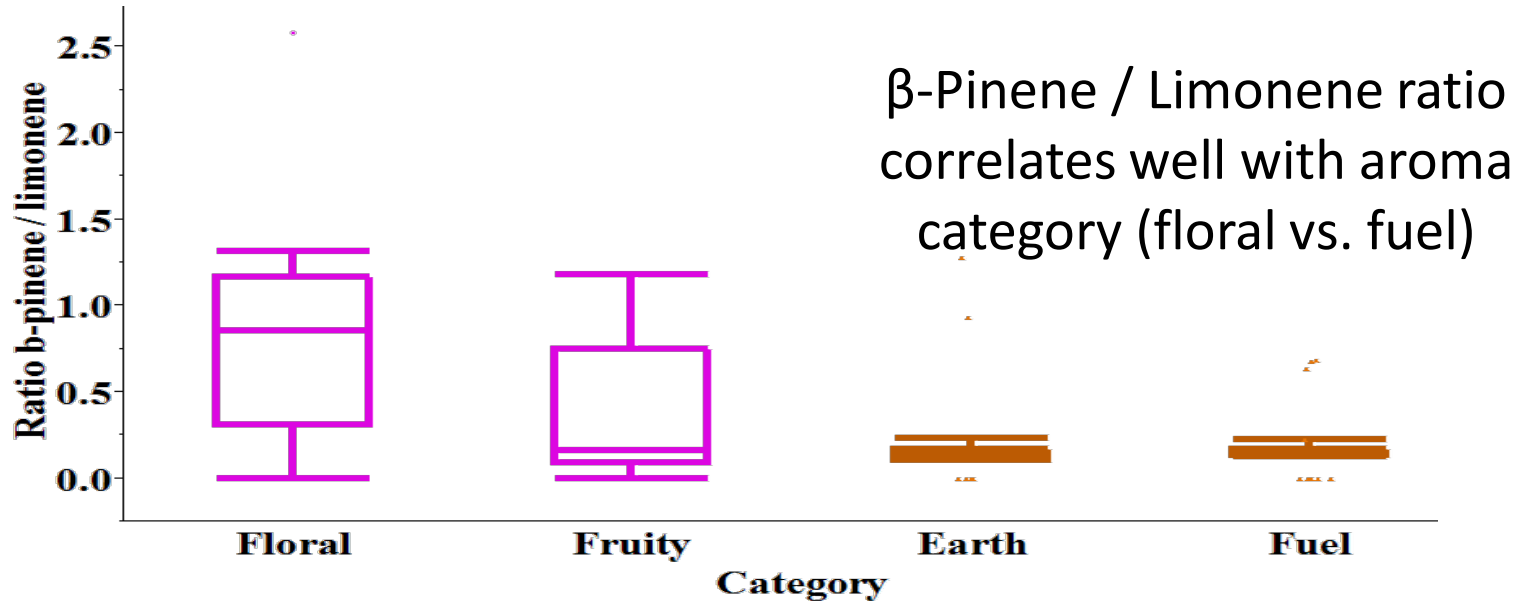
- Dried cannabis flowers were obtained from 12 different cultivars
- Extracted with methanol
- Analyzed beta-pine/limonene ratio
- Looked at other features

Cultivar	BP/LIM Ratio
Pineapple Upside Down Cake	Hi
Blue Dreams	Hi
Northern Wreck	Lo
Acapulco Gold	Hi
P-Funk	Hi
P-Funk x Black Dog	Hi
Lemon OG	Lo
Zkittlez x Black Dog	Hi
Z-Dog	Lo
Orange Valley Delight	Hi
Super Sour Diesel	Lo
GMO x Black Dog	Lo

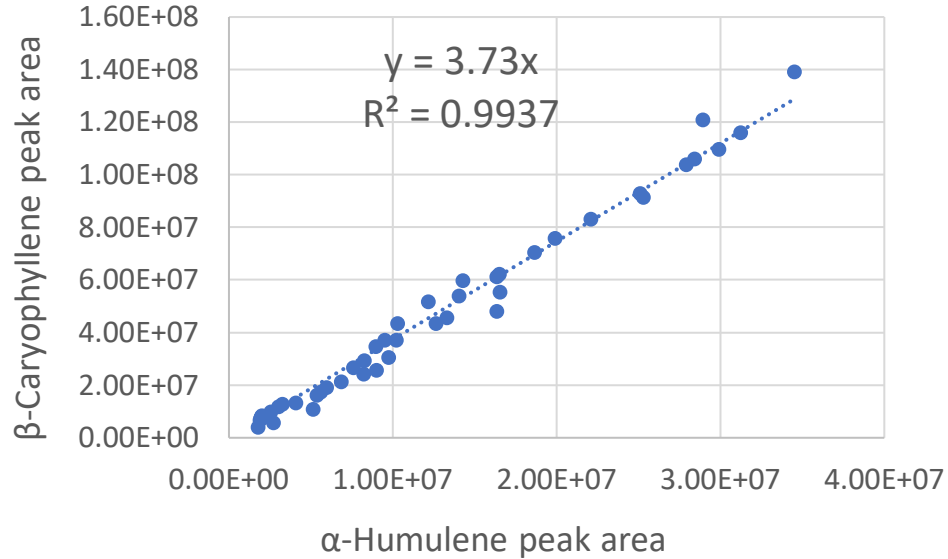
Diagnostic ratios in cannabis profiling



Diagnostic ratios in cannabis profiling

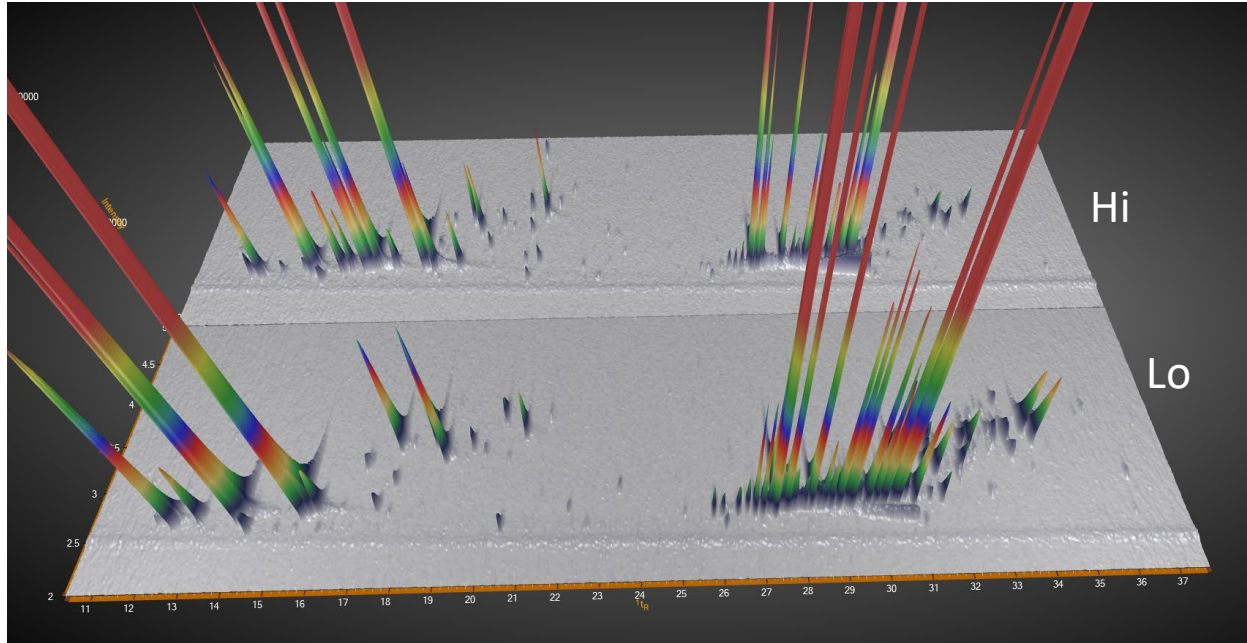


Diagnostic ratios in cannabis profiling



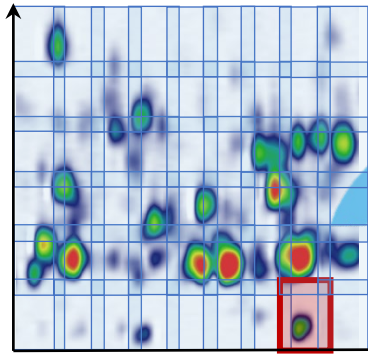
β -Caryophyllene/ α -Humulene
Ratio

Analysis of cannabis by GC×GC-TOF MS

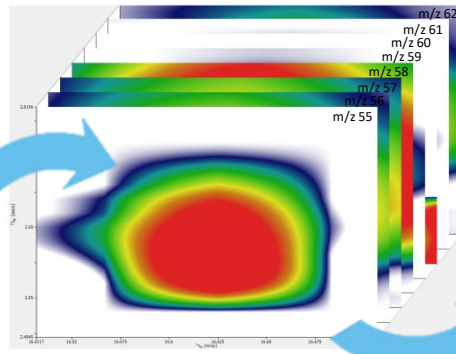


More detail than
a single ratio can
provide

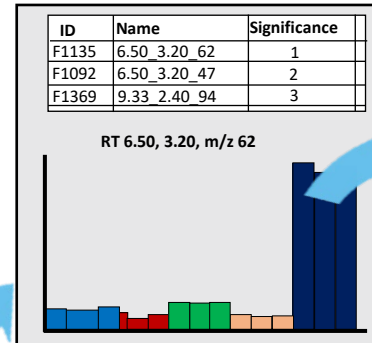
Reducing the dimensionality of data



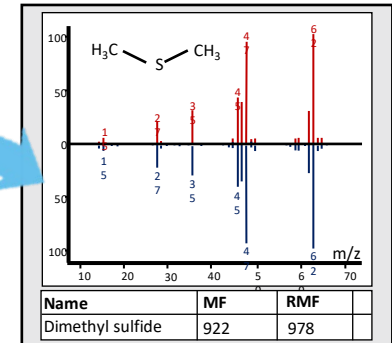
Aligned chromatogram is automatically split in to sections



Every m/z channel is automatically compared for every tile of every datafile



Feature discovery highlights the key differences between sample classes



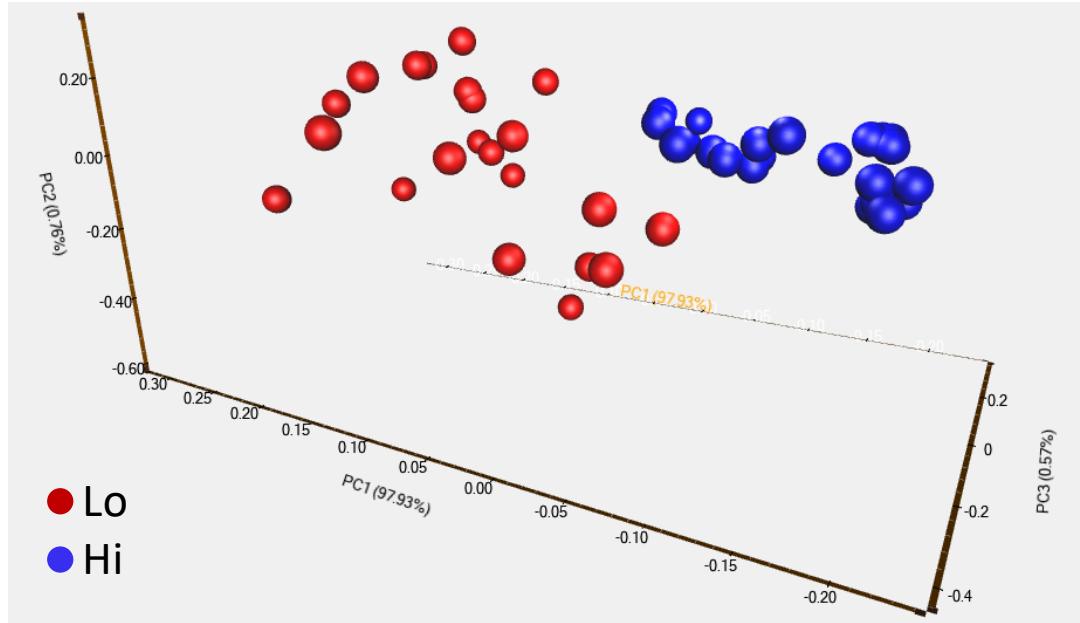
Review and identify differences

- Untargeted, tile-based data analysis

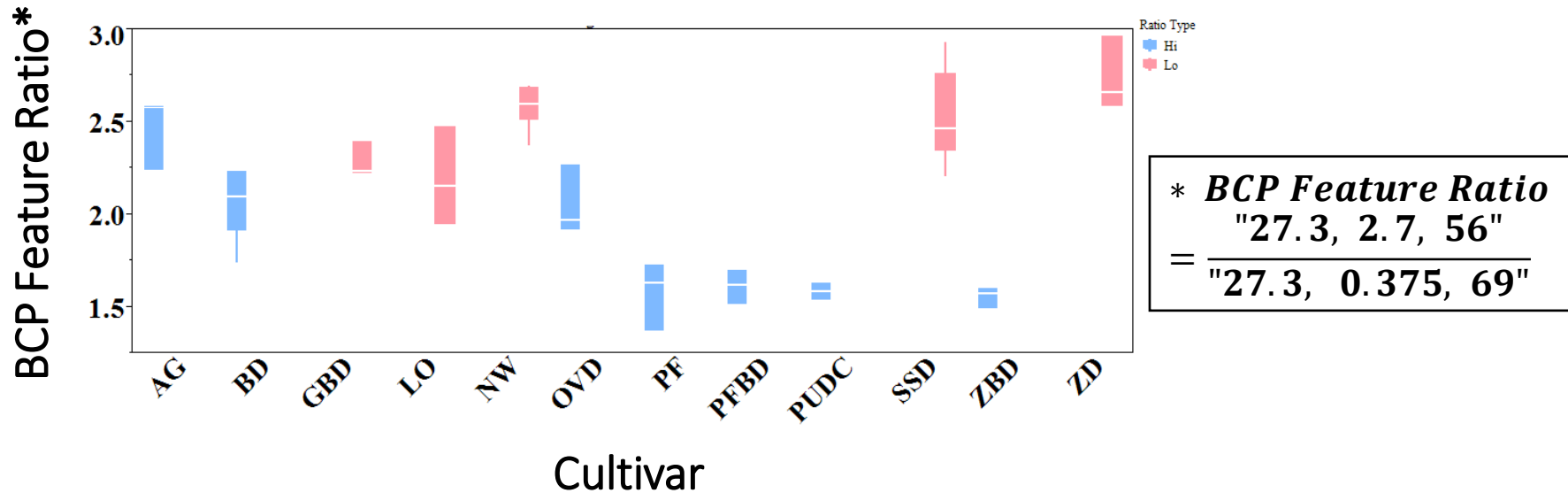
Expanding on the Floral vs. Fuel classification:

Categorization based on beta-pinene / limonene ratio type

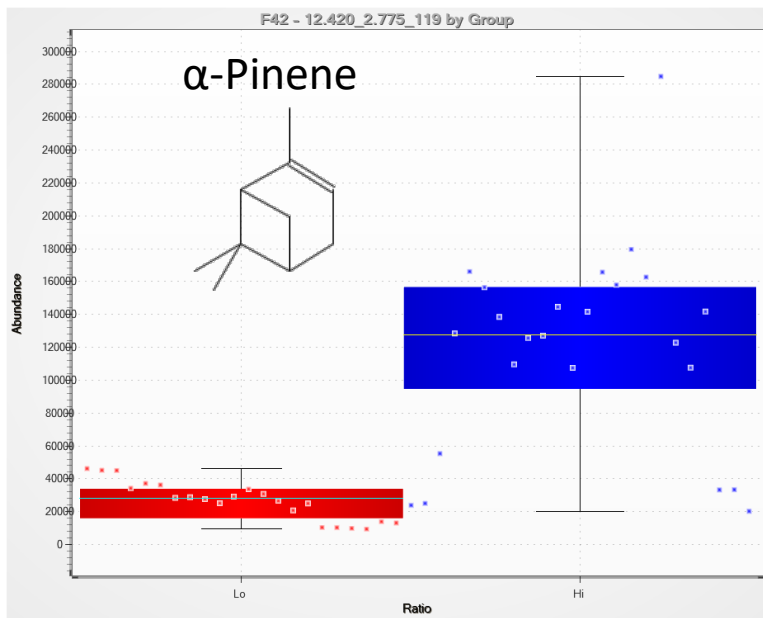
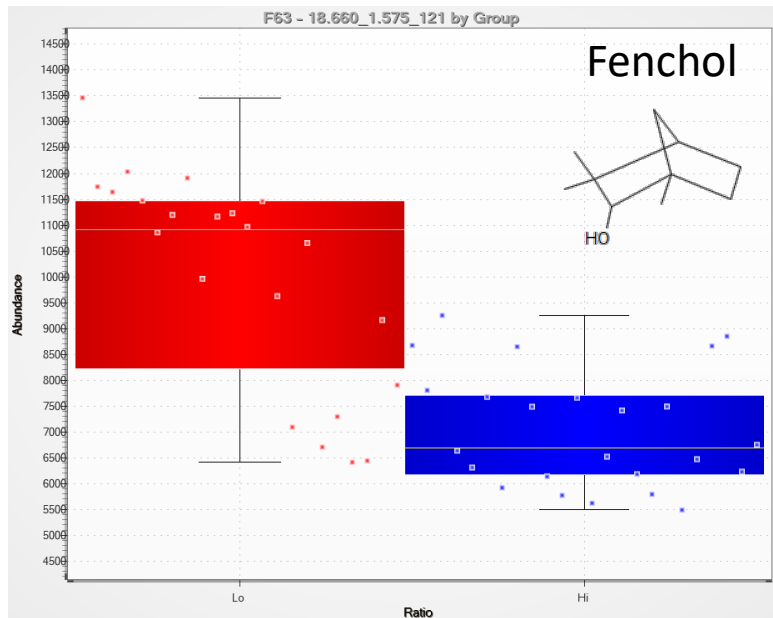
- 12 cannabis cultivars analysed in triplicate
- Untargeted, tile-based data analysis



Ratio of 2 BCP Features Correlates Largely with BPIN / LIM Ratio Type

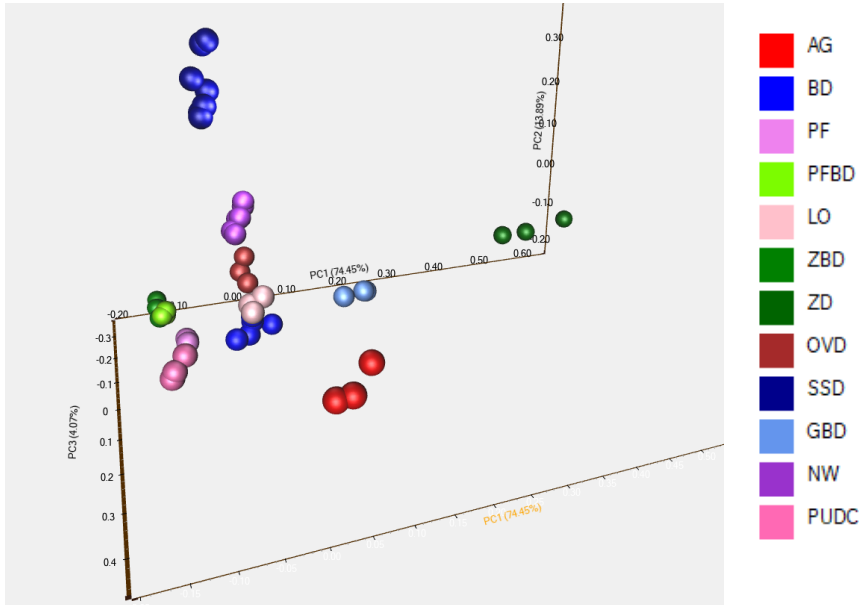


Expanding on the Floral vs. Fuel classification: Categorization based on beta-pinene / limonene ratio type



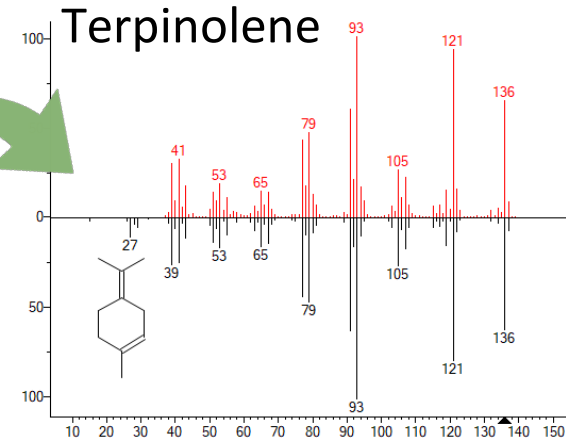
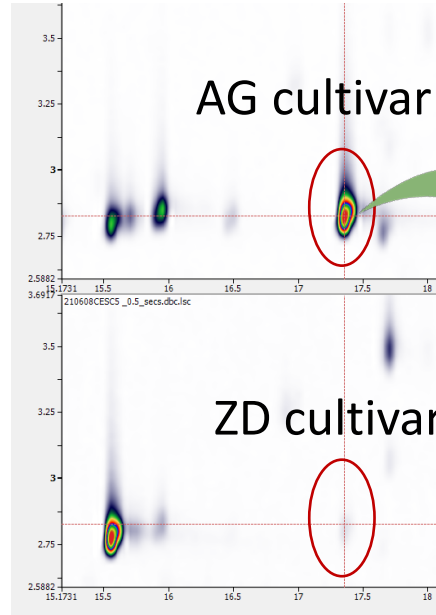
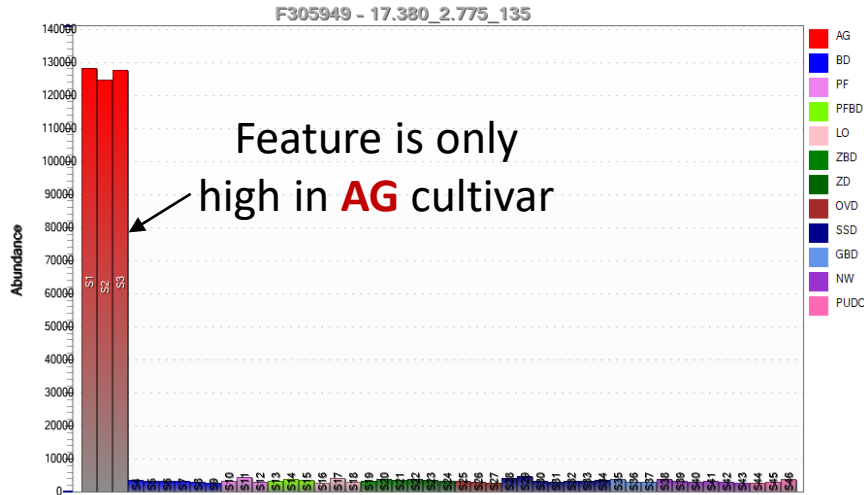
Floral
Fuel

Distinguishing individual cultivars

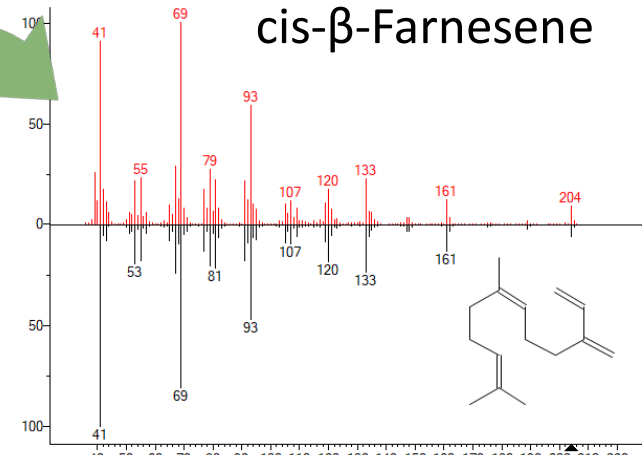
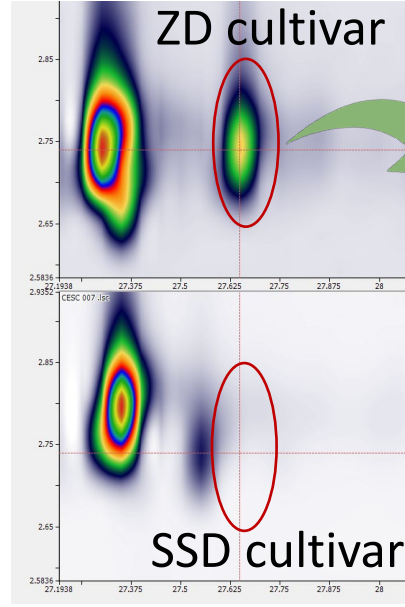
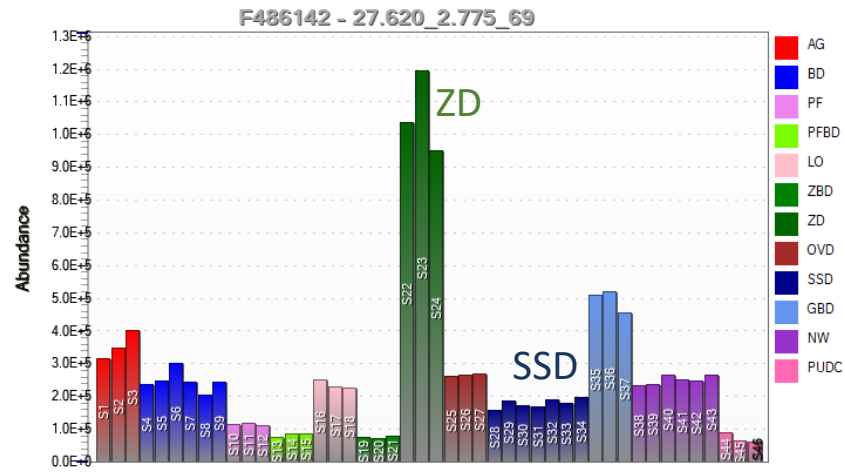


- All cultivar replicates cluster closely
- Z-Dog (ZD) is clearly differentiated by PC1
- Super Sour Diesel (SSD) is clearly differentiated by PC2

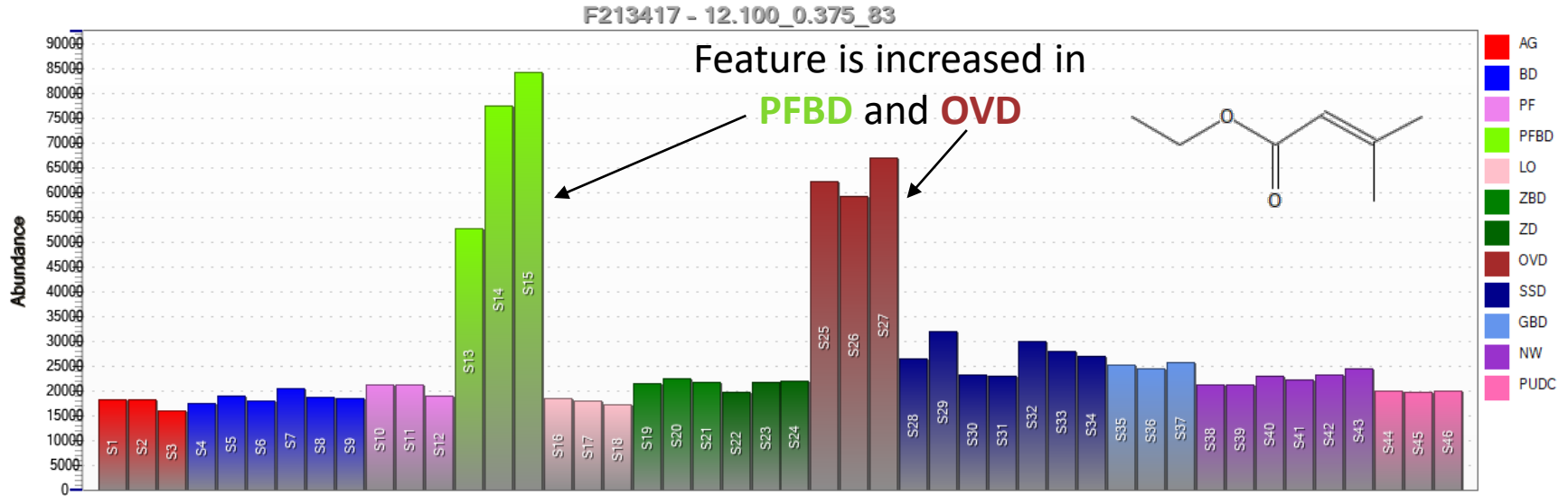
Distinguishing individual cultivars



Distinguishing individual cultivars

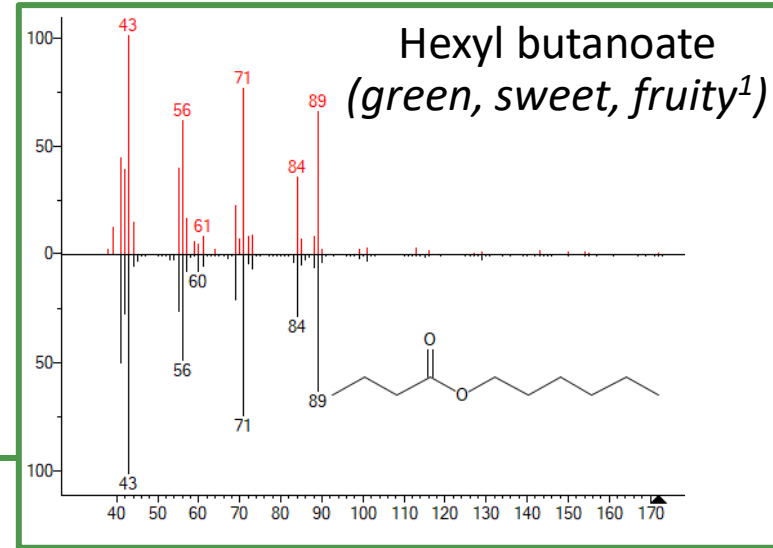
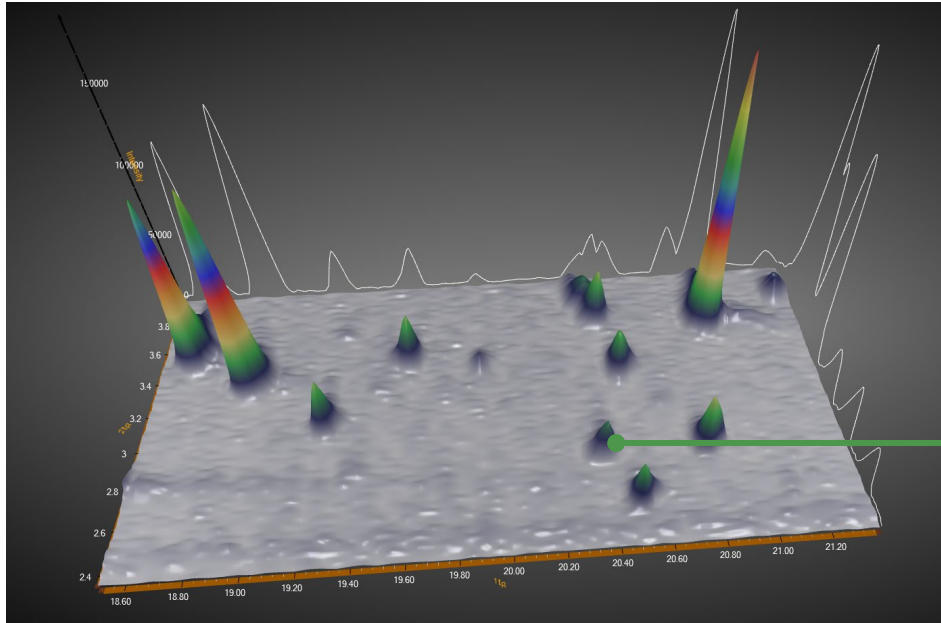


Looking beyond terpenes



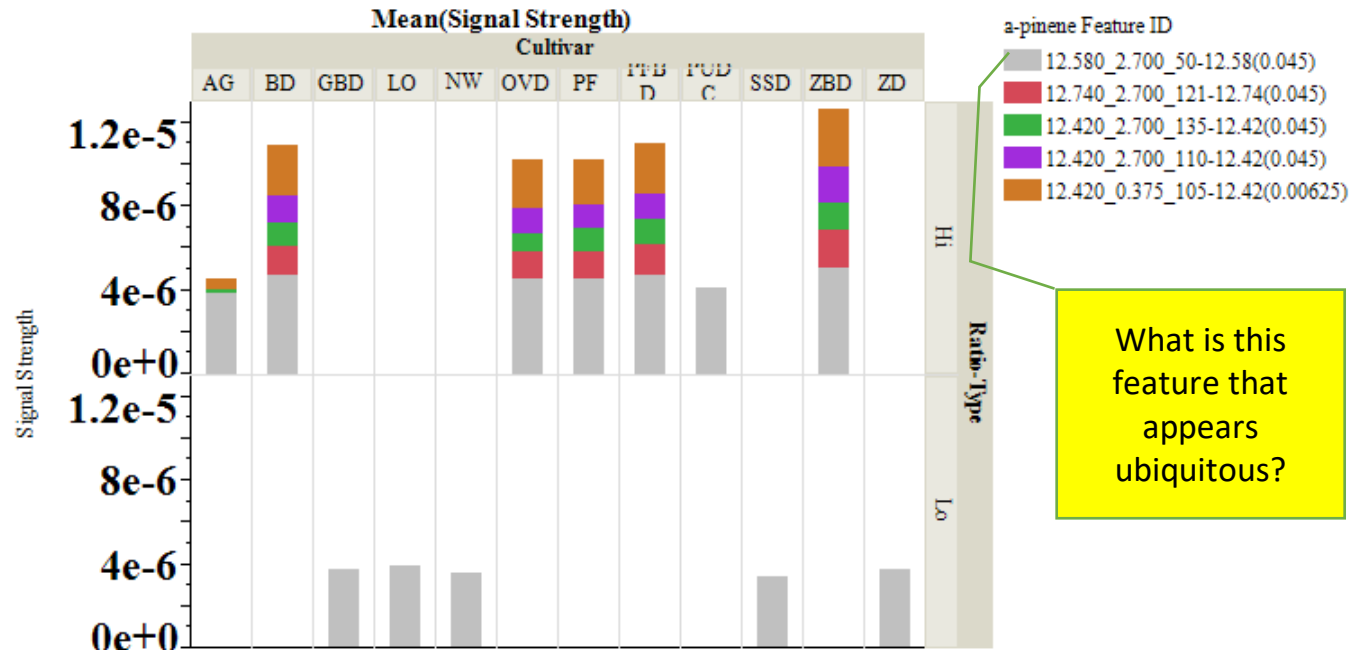
- Feature identified as the ester, ethyl 3-methyl-2-butenate

Looking beyond terpenes

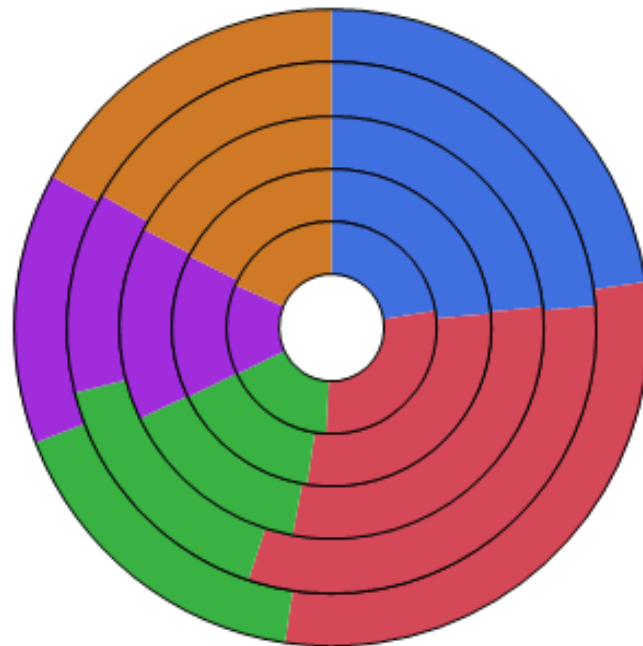
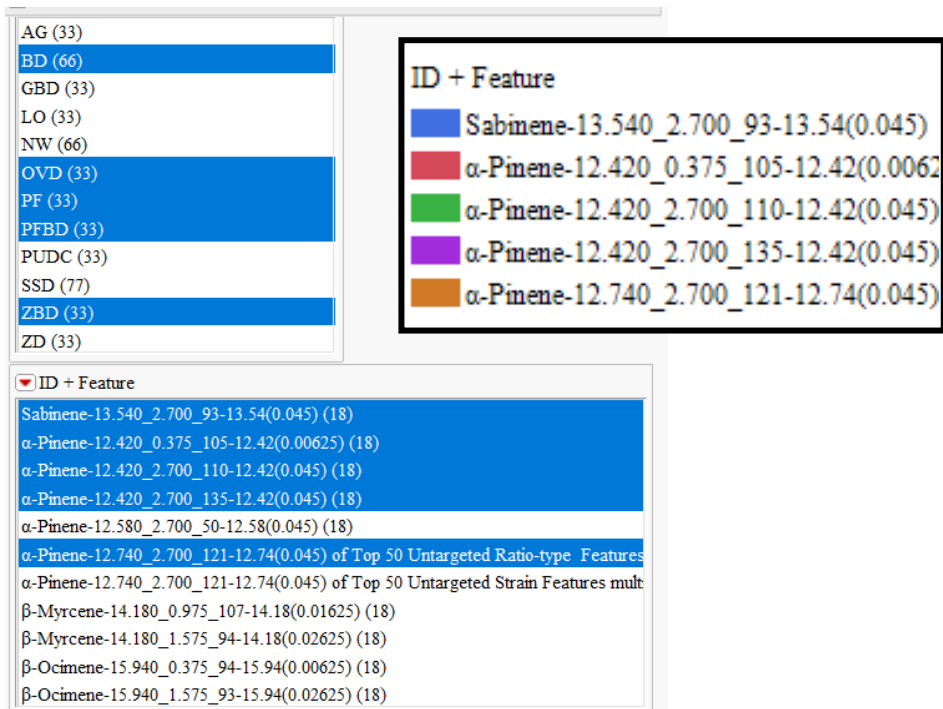


¹Good Scents database,
<http://www.thegoodscentcompany.com/>

α -Pinene primarily appears as a cluster of features



α -Pinene feature cluster includes sabinene . . .

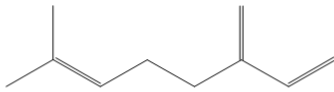
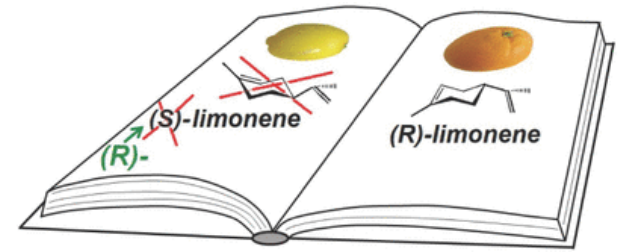


Summary

- ✿ GC×GC–TOF MS provides the enhanced separation necessary for robust profiling of terpenes
- ✿ Additional chemical differences were uncovered between the “Floral” and “Fuel” classes
- ✿ Unique chemical markers can further distinguish individual cultivars
- ✿ Provides improved product definition, through superior cultivar selection and improved labelling and categorization strategies

Cannabis aroma volatiles

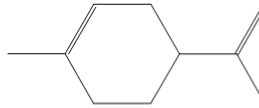
- Cannabis terpenes and terpenoids
 - ✓ Impart distinctive aromas and flavours



Myrcene

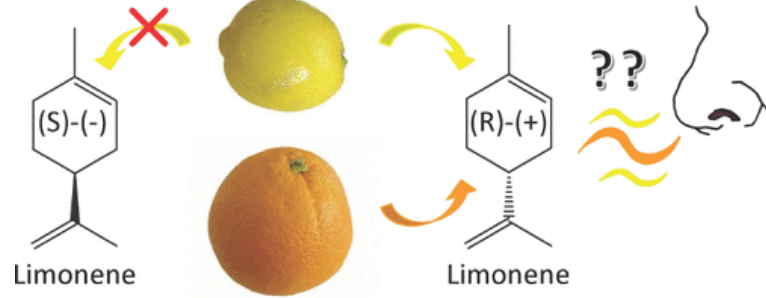
Aroma

Spicy, herbal



Limonene

Citrus, orange



“From the literature, it is therefore difficult to know what to believe when it comes to the odor of limonene.” (J. Chem. Educ. 2021, 98, 11, 3600–3607)

- Many other aroma volatiles are also present, e.g. esters, aldehydes, etc.

Thanks for listening! Any questions?



aldwin@vedascientific.co



+1 805-741-8881

We want to hear from you!

Scan the QR code below to provide your feedback on the presentation.

